

Nicholson St between Quadra St and Morris Dr

October 28, 2019 To November 01, 2019



The data presented here is for information purposes only and should not be considered authoritative for construction, geotechnical, engineering, navigational, legal, or other site-specific uses. The information shared is owned by the Transportation Division of the Engineering Department at the District of Saanich. Accuracy is not guaranteed.

Start Date: 28-Oct-19
 Start Time: 1:31
 Station ID: C0050-01

Location 1: Nicholson St between Quadra St and Morris Dr

Note:

DATE:	October 28, 2019		October 29, 2019		October 30, 2019		October 31, 2019		November 1, 2019		WK AVG		WK AVG	HOURLY
	MON		TUE		WED		THURS		FRI		EB	WB	CH 1+2	%
Time:	EB	WB	EB	WB	EB	WB	EB	WB	EB	WB	EB	WB		
12-1 AM			0	0	1	1	7	2			3	1	4	0.3%
1-2 AM			1	0	1	0	1	0			1	0	1	0.1%
2-3 AM			1	0	3	2	1	2			2	1	3	0.2%
3-4 AM			0	1	0	1	1	1			0	1	1	0.1%
4-5 AM			2	1	0	0	0	1			1	1	1	0.1%
5-6 AM			7	6	2	4	4	5			4	5	9	0.7%
6-7 AM			23	14	15	16	16	10			18	13	31	2.4%
7-8 AM			52	30	56	27	58	27			55	28	83	6.3%
8-9 AM			81	39	79	42	78	43			79	41	121	9.2%
9-10 AM			48	56	51	16	55	27			51	33	84	6.4%
10-11 AM			62	29	40	24	36	30			46	28	74	5.6%
11-12 PM			62	55	53	26	49	23			55	35	89	6.8%
12-1 PM			58	57	52	24	42	23			51	35	85	6.5%
1-2 PM			57	55	46	23	40	21			48	33	81	6.1%
2-3 PM			55	59	58	32	65	24			59	38	98	7.4%
3-4 PM			77	58	79	52	66	34			74	48	122	9.3%
4-5 PM			97	29	87	38	83	42			89	36	125	9.5%
5-6 PM			66	29	73	26	57	27			65	27	93	7.0%
6-7 PM			36	27	50	30	36	29			41	29	69	5.3%
7-8 PM			38	20	40	21	26	20			35	20	55	4.2%
8-9 PM			21	18	17	7	31	29			23	18	41	3.1%
9-10 PM			15	11	14	7	17	11			15	10	25	1.9%
10-11 PM			7	0	7	4	10	8			8	4	12	0.9%
11-12 AM			5	2	4	2	7	1			5	2	7	0.5%
LANES			871	596	828	425	786	440			828	487	1315	100.0%
TOTAL			1467		1253		1226				1320			
	MON		TUE		WED		THURS		FRI		WK AVG			

PEAK HOUR					TOTAL VEHICALS-PEAK PERIODS		2 HOUR PEAK INTERVALS				
MAX. 7 - 9 am PEAK HOUR	121	⇒	9.2%	between 8-9 AM	597	⇒	6 HR TOTAL	2 HR AM (7 - 9 AM)			
MAX. 7 - 11 am PEAK HOUR	121	⇒	9.2%	between 8-9 AM	422	⇒	4 HR TOTAL	VEH / HR	VEH / 2HR	2 HR %	
MAX. 11 am - 1 pm PEAK HOUR	89	⇒	6.8%	between 11-12 PM				7-8 AM	83	204	15.5%
MAX. 11 am - 3 pm PEAK HOUR	98	⇒	7.4%	between 2-3 PM				8-9 AM	121		
MAX. 4 - 6 pm PEAK HOUR	125	⇒	9.5%	between 4-5 PM				2 HR NOON (11 - 1 PM)			
MAX. 3 - 6 pm PEAK HOUR	125	⇒	9.5%	between 4-5 PM				VEH / HR	VEH / 2HR	2 HR %	
								11-12 PM	89	175	13.3%
								12-1 PM	85		
								2 HR PM (4 - 6 PM)			
								VEH / HR	VEH / 2HR	2 HR %	
								4-5 PM	125	218	16.6%
								5-6 PM	93		

Nicholson St between Quadra St and Morris Dr

Westbound

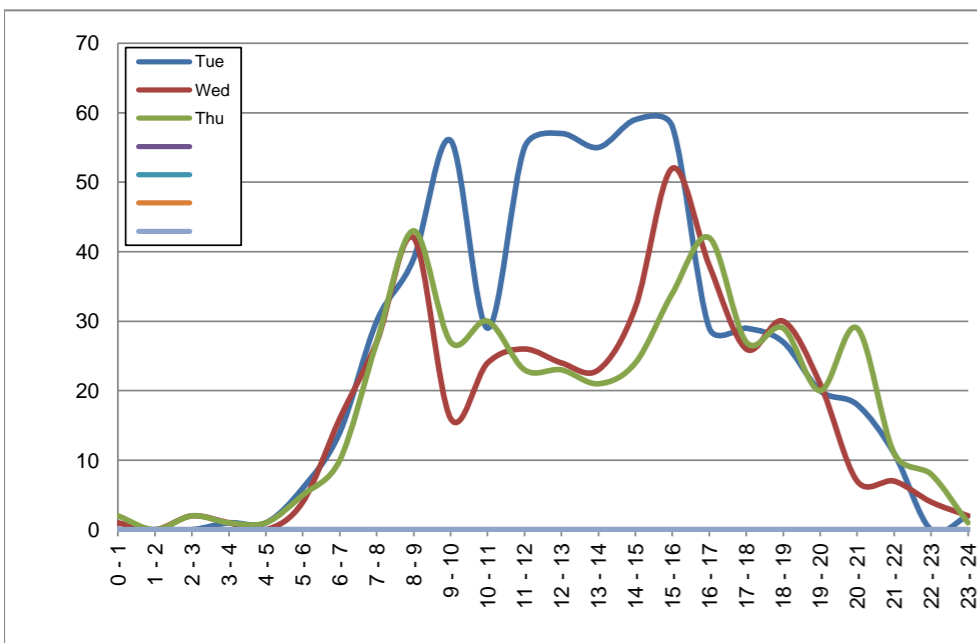
October 29, 2019 to October 31, 2019

Hourly Volumes

Time Period	Tue	Wed	Thu				
	Oct 29	Oct 30	Oct 31				
0 - 1	0	1	2				
1 - 2	0	0	0				
2 - 3	0	2	2				
3 - 4	1	1	1				
4 - 5	1	0	1				
5 - 6	6	4	5				
6 - 7	14	16	10				
7 - 8	30	27	27				
8 - 9	39	42	43				
9 - 10	56	16	27				
10 - 11	29	24	30				
11 - 12	55	26	23				
12 - 13	57	24	23				
13 - 14	55	23	21				
14 - 15	59	32	24				
15 - 16	58	52	34				
16 - 17	29	38	42				
17 - 18	29	26	27				
18 - 19	27	30	29				
19 - 20	20	21	20				
20 - 21	18	7	29				
21 - 22	11	7	11				
22 - 23	0	4	8				
23 - 24	2	2	1				
Day Total	596	425	440				

15-Minute Volumes

Time Start	Tue	Wed	Thu				
	Oct 29	Oct 30	Oct 31				
0:00	0	0	1				
0:15	0	0	0				
0:30	0	0	1				
0:45	0	1	0				
1:00	0	0	0				
1:15	0	0	0				
1:30	0	0	0				
1:45	0	0	0				
2:00	0	1	0				
2:15	0	1	1				
2:30	0	0	0				
2:45	0	0	1				
3:00	1	0	0				
3:15	0	0	0				
3:30	0	0	0				
3:45	0	1	1				
4:00	0	0	0				
4:15	0	0	0				
4:30	0	0	1				
4:45	1	0	0				
5:00	2	0	0				
5:15	0	1	0				
5:30	1	3	3				
5:45	3	0	2				
6:00	0	3	1				
6:15	4	2	3				
6:30	5	5	3				
6:45	5	6	3				
7:00	3	2	6				
7:15	5	2	4				
7:30	13	10	9				
7:45	9	13	8				
8:00	9	10	8				
8:15	14	13	12				
8:30	8	8	15				
8:45	8	11	8				
9:00	15	1	8				
9:15	11	3	6				
9:30	16	6	5				
9:45	14	6	8				
10:00	14	2	8				
10:15	5	8	3				
10:30	7	8	11				
10:45	3	6	8				
11:00	10	5	7				
11:15	22	8	3				
11:30	13	8	4				
11:45	10	5	9				
12:00	19	6	8				
12:15	11	6	2				
12:30	13	4	10				
12:45	14	8	3				
13:00	16	5	2				
13:15	12	8	8				
13:30	11	6	9				
13:45	16	4	2				
14:00	10	12	5				
14:15	11	5	5				
14:30	15	10	7				
14:45	23	5	7				
15:00	15	14	5				
15:15	20	10	6				
15:30	9	13	14				
15:45	14	15	9				
16:00	6	8	13				
16:15	5	9	12				
16:30	8	11	5				
16:45	10	10	12				
17:00	6	6	6				
17:15	12	5	11				
17:30	6	5	7				
17:45	5	10	3				
18:00	6	4	10				
18:15	9	8	7				
18:30	5	7	10				
18:45	7	11	2				
19:00	1	4	6				
19:15	11	10	3				
19:30	4	3	7				
19:45	4	4	4				
20:00	5	1	8				
20:15	6	3	10				
20:30	3	1	7				
20:45	4	2	4				
21:00	2	1	6				
21:15	3	0	2				
21:30	2	5	2				
21:45	4	1	1				
22:00	0	1	4				
22:15	0	1	2				
22:30	0	1	1				
22:45	0	1	1				
23:00	0	2	0				
23:15	1	0	1				
23:30	1	0	0				
23:45	0	0	0				



Site notes:

Nicholson St between Quadra St and Morris Dr

Eastbound

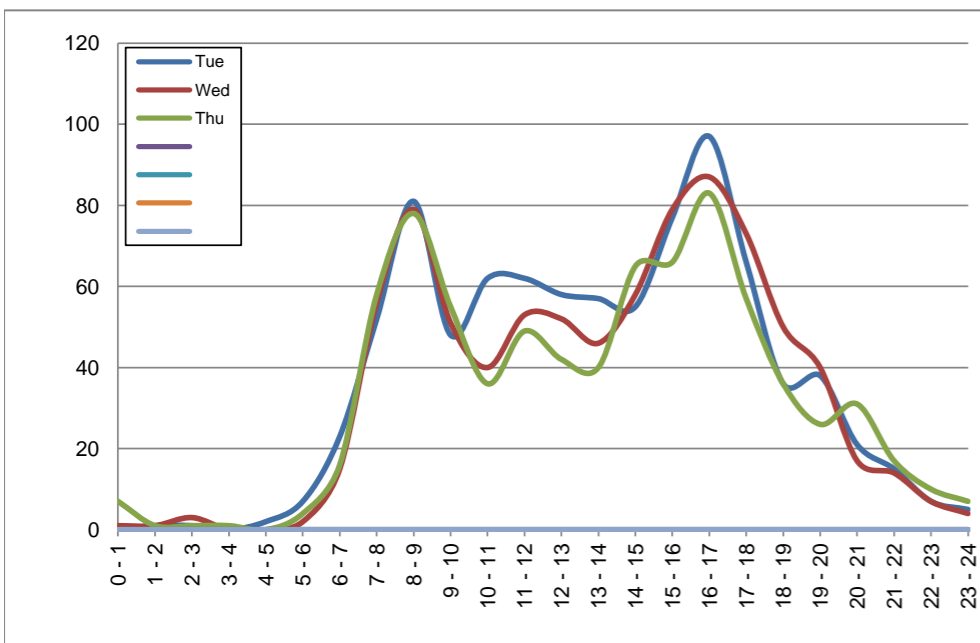
October 29, 2019 to October 31, 2019

Hourly Volumes

Time Period	Tue	Wed	Thu			
	Oct 29	Oct 30	Oct 31			
0 - 1	0	1	7			
1 - 2	1	1	1			
2 - 3	1	3	1			
3 - 4	0	0	1			
4 - 5	2	0	0			
5 - 6	7	2	4			
6 - 7	23	15	16			
7 - 8	52	56	58			
8 - 9	81	79	78			
9 - 10	48	51	55			
10 - 11	62	40	36			
11 - 12	62	53	49			
12 - 13	58	52	42			
13 - 14	57	46	40			
14 - 15	55	58	65			
15 - 16	77	79	66			
16 - 17	97	87	83			
17 - 18	66	73	57			
18 - 19	36	50	36			
19 - 20	38	40	26			
20 - 21	21	17	31			
21 - 22	15	14	17			
22 - 23	7	7	10			
23 - 24	5	4	7			
Day Total	871	828	786			

15-Minute Volumes

Time Start	Tue	Wed	Thu				Time Start	Tue	Wed	Thu			
	Oct 29	Oct 30	Oct 31					Oct 29	Oct 30	Oct 31			
0:00	0	0	4				12:00	12	4	10			
0:15	0	1	0				12:15	17	15	12			
0:30	0	0	3				12:30	6	17	11			
0:45	0	0	0				12:45	23	16	9			
1:00	0	0	0				13:00	11	14	7			
1:15	0	1	0				13:15	12	13	10			
1:30	1	0	1				13:30	15	10	9			
1:45	0	0	0				13:45	19	9	14			
2:00	0	1	0				14:00	13	16	20			
2:15	0	2	0				14:15	15	16	17			
2:30	0	0	1				14:30	13	14	9			
2:45	1	0	0				14:45	14	12	19			
3:00	0	0	0				15:00	21	19	14			
3:15	0	0	0				15:15	19	22	15			
3:30	0	0	1				15:30	24	20	20			
3:45	0	0	0				15:45	13	18	17			
4:00	0	0	0				16:00	24	21	16			
4:15	0	0	0				16:15	26	27	19			
4:30	1	0	0				16:30	24	17	26			
4:45	1	0	0				16:45	23	22	22			
5:00	0	0	0				17:00	19	15	10			
5:15	0	0	0				17:15	19	23	17			
5:30	1	0	0				17:30	10	19	18			
5:45	6	2	4				17:45	18	16	12			
6:00	6	3	5				18:00	8	18	14			
6:15	5	4	3				18:15	11	11	12			
6:30	6	3	3				18:30	10	14	7			
6:45	6	5	5				18:45	7	7	3			
7:00	6	5	7				19:00	10	9	5			
7:15	8	13	15				19:15	11	10	7			
7:30	11	12	13				19:30	6	12	7			
7:45	27	26	23				19:45	11	9	7			
8:00	23	34	27				20:00	5	3	9			
8:15	22	17	18				20:15	6	5	7			
8:30	15	12	16				20:30	4	2	10			
8:45	21	16	17				20:45	6	7	5			
9:00	14	16	9				21:00	2	5	4			
9:15	17	11	20				21:15	9	3	7			
9:30	10	10	14				21:30	3	1	3			
9:45	7	14	12				21:45	1	5	3			
10:00	17	13	7				22:00	1	1	0			
10:15	14	8	6				22:15	3	2	5			
10:30	14	9	12				22:30	1	1	5			
10:45	17	10	11				22:45	2	3	0			
11:00	19	12	12				23:00	3	2	1			
11:15	13	16	10				23:15	1	2	2			
11:30	19	12	17				23:30	0	0	3			
11:45	11	13	10				23:45	1	0	1			



Site notes:

Vehicle Speed Summary

Saanich Engineering Department

Count Id: **C0050-01**

Filename: **Nicholson St between Quadra St and Morris Dr-Oct-2019.xlsm**

Location: Nicholson St between Quadra St and Morris Dr

Note:

Direction: **East-West**

Dates: **October 28, 2019 To November 01, 2019**

Filtered data

AVG. SPEED	20 mph	32 km/h
50 % SPEED	20 mph	33 km/h
85 % SPEED	24 mph	38 km/h
95 % SPEED	26 mph	42 km/h

Location Map



Nicholson St between Quadra St and Morris Dr

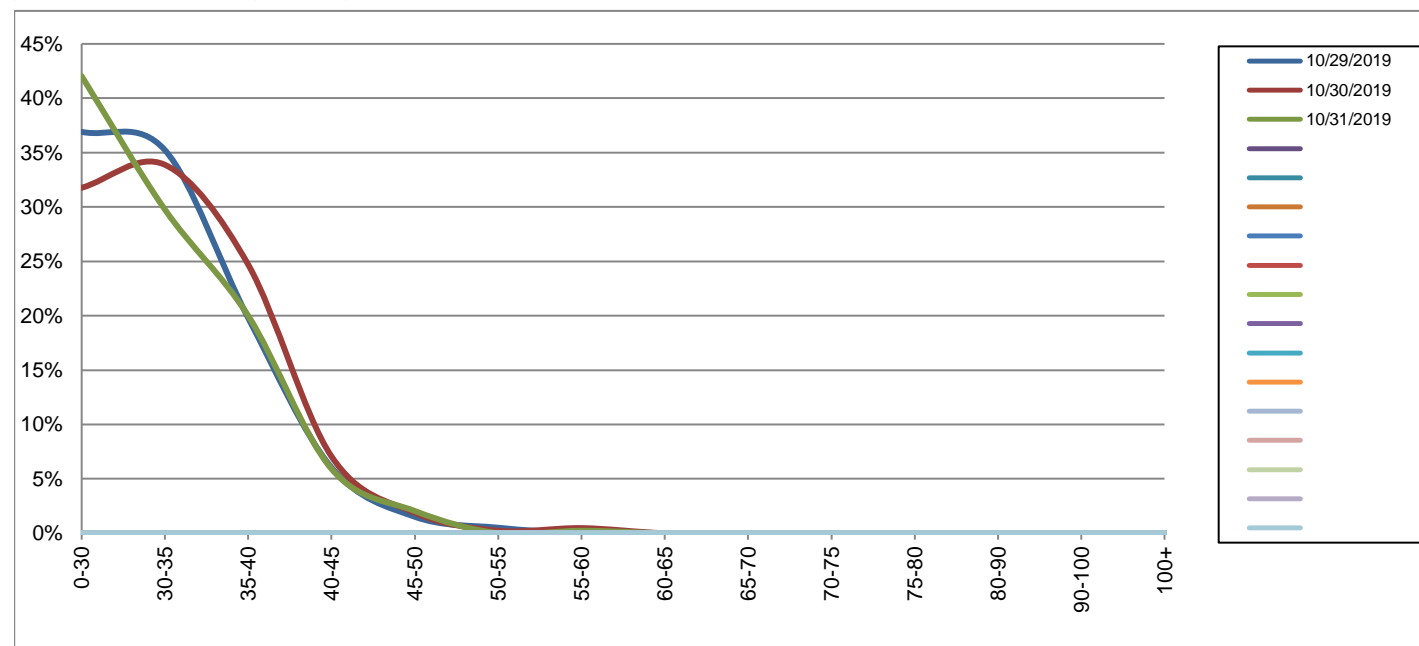
Westbound

October 29, 2019 to October 31, 2019

Daily Speed Bin Percentages															Daily Speed Bin Volumes														Total	Avg. Speed
Bin #	1	2	3	4	5	6	7	8	9	10	11	12	13	14	1	2	3	4	5	6	7	8	9	10	11	12	13	14		
Bin Speeds	0-30	30-35	35-40	40-45	45-50	50-55	55-60	60-65	65-70	70-75	75-80	80-90	90-100	100+	0-30	30-35	35-40	40-45	45-50	50-55	55-60	60-65	65-70	70-75	75-80	80-90	90-100	100+	Volume	Speed
10/29/2019	36.9%	35.2%	19.8%	6.0%	1.5%	0.5%	0.0%	0.0%	0.0%	0.0%	0.0%	0.0%	0.0%	0.0%	220	210	118	36	9	3	0	0	0	0	0	0	0	0	596	28
10/30/2019	31.8%	33.9%	24.7%	7.1%	1.9%	0.2%	0.5%	0.0%	0.0%	0.0%	0.0%	0.0%	0.0%	0.0%	135	144	105	30	8	1	2	0	0	0	0	0	0	0	425	29
10/31/2019	42.0%	29.8%	20.0%	5.9%	2.0%	0.0%	0.2%	0.0%	0.0%	0.0%	0.0%	0.0%	0.0%	0.0%	185	131	88	26	9	0	1	0	0	0	0	0	0	0	440	27
Total	37.0%	33.2%	21.3%	6.3%	1.8%	0.3%	0.2%	0.0%	0.0%	0.0%	0.0%	0.0%	0.0%	0.0%	540	485	311	92	26	4	3	0	0	0	0	0	0	1461	28	

Speed Data Summary

Bin #	1	2	3	4	5	6	7	8	9	10	11	12	13	14	Total
Bin Speeds	0-30	30-35	35-40	40-45	45-50	50-55	55-60	60-65	65-70	70-75	75-80	80-90	90-100	100+	
Survey Total	540	485	311	92	26	4	3	0	0	0	0	0	0	0	1461
% Total	37.0%	33.2%	21.3%	6.3%	1.8%	0.3%	0.2%	0.0%	0.0%	0.0%	0.0%	0.0%	0.0%	0.0%	100%
Accumulated %	37.0%	70.2%	91.4%	97.7%	99.5%	99.8%	100.0%	100.0%	100.0%	100.0%	100.0%	100.0%	100.0%	100.0%	
Inverse Accum. %	63.0%	29.8%	8.6%	2.3%	0.5%	0.2%	0.0%	0.0%	0.0%	0.0%	0.0%	0.0%	0.0%	0.0%	
Average Speed	28 KM/H														



Site notes:

Nicholson St between Quadra St and Morris Dr

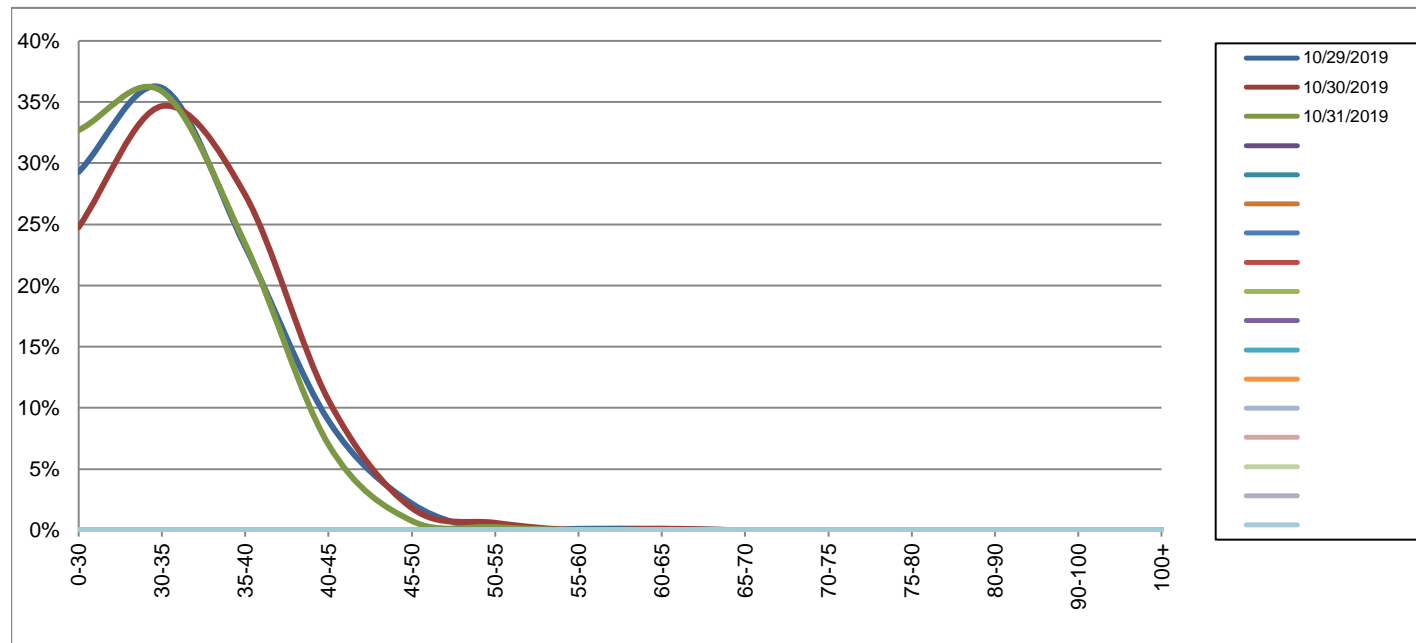
Eastbound

October 29, 2019 to October 31, 2019

Daily Speed Bin Percentages															Daily Speed Bin Volumes														Total	Avg.
Bin #	1	2	3	4	5	6	7	8	9	10	11	12	13	14	1	2	3	4	5	6	7	8	9	10	11	12	13	14	Volume	Speed
Bin Speeds	0-30	30-35	35-40	40-45	45-50	50-55	55-60	60-65	65-70	70-75	75-80	80-90	90-100	100+	0-30	30-35	35-40	40-45	45-50	50-55	55-60	60-65	65-70	70-75	75-80	80-90	90-100	100+		
10/29/2019	29.3%	36.2%	23.2%	9.0%	2.2%	0.0%	0.1%	0.1%	0.0%	0.0%	0.0%	0.0%	0.0%	0.0%	255	315	202	78	19	0	1	1	0	0	0	0	0	0	871	30
10/30/2019	24.8%	34.7%	27.4%	10.6%	1.8%	0.6%	0.0%	0.1%	0.0%	0.0%	0.0%	0.0%	0.0%	0.0%	205	287	227	88	15	5	0	1	0	0	0	0	0	0	828	31
10/31/2019	32.7%	35.9%	23.4%	7.0%	0.8%	0.3%	0.0%	0.0%	0.0%	0.0%	0.0%	0.0%	0.0%	0.0%	257	282	184	55	6	2	0	0	0	0	0	0	0	0	786	29
Total	28.9%	35.6%	24.7%	8.9%	1.6%	0.3%	0.0%	0.1%	0.0%	0.0%	0.0%	0.0%	0.0%	0.0%	717	884	613	221	40	7	1	2	0	0	0	0	0	2485	30	

Speed Data Summary

Bin #	1	2	3	4	5	6	7	8	9	10	11	12	13	14	Total
Bin Speeds	0-30	30-35	35-40	40-45	45-50	50-55	55-60	60-65	65-70	70-75	75-80	80-90	90-100	100+	
Survey Total	717	884	613	221	40	7	1	2	0	0	0	0	0	0	2485
% Total	28.9%	35.6%	24.7%	8.9%	1.6%	0.3%	0.0%	0.1%	0.0%	0.0%	0.0%	0.0%	0.0%	0.0%	100%
Accumulated %	28.9%	64.4%	89.1%	98.0%	99.6%	99.9%	99.9%	100.0%	100.0%	100.0%	100.0%	100.0%	100.0%	100.0%	
Inverse Accum. %	71.1%	35.6%	10.9%	2.0%	0.4%	0.1%	0.1%	0.0%	0.0%	0.0%	0.0%	0.0%	0.0%	0.0%	
Average Speed	30 KM/H														



Site notes:

Nicholson St between Quadra St and Morris Dr

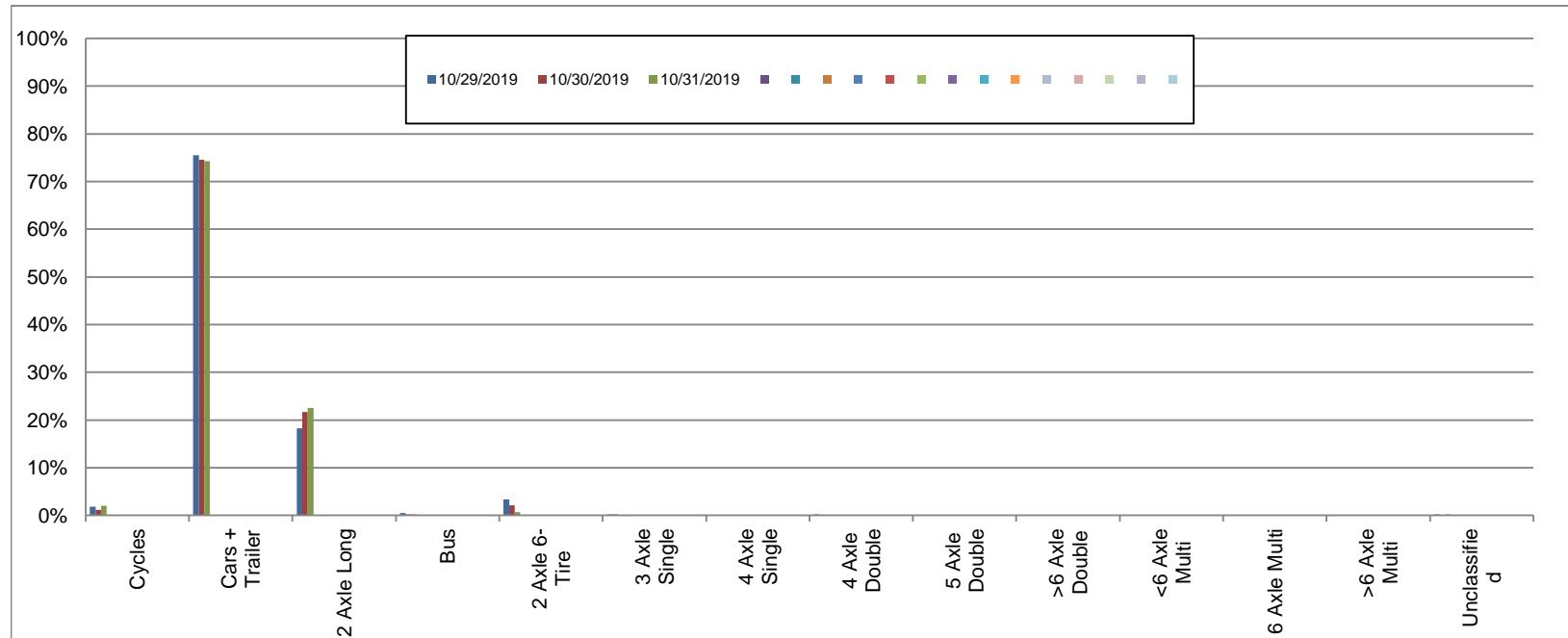
Westbound

October 29, 2019 to October 31, 2019

Daily Class Bin Percentages															Daily Class Bin Volumes															
Bin #	1	2	3	4	5	6	7	8	9	10	11	12	13	14	1	2	3	4	5	6	7	8	9	10	11	12	13	14	Total	
Bin Class	Cycles	Cars + Trailer	2 Axle Long	Bus	2 Axle 6-Tire	3 Axle Single	4 Axle Single	4 Axle Double	5 Axle Double	>6 Axle Double	<6 Axle Multi	6 Axle Multi	>6 Axle Multi	Unclassified	Cycles	Cars + Trailer	2 Axle Long	Bus	2 Axle 6-Tire	3 Axle Single	4 Axle Single	4 Axle Double	5 Axle Double	>6 Axle Double	<6 Axle Multi	6 Axle Multi	>6 Axle Multi	Unclassified	Total Volume	
10/29/2019	1.8%	75.5%	18.3%	0.5%	3.4%	0.2%	0.0%	0.2%	0.0%	0.0%	0.0%	0.0%	0.0%	0.2%	11	450	109	3	20	1	0	1	0	0	0	0	0	0	1	596
10/30/2019	1.2%	74.6%	21.6%	0.2%	2.1%	0.2%	0.0%	0.0%	0.0%	0.0%	0.0%	0.0%	0.0%	0.0%	5	317	92	1	9	1	0	0	0	0	0	0	0	0	0	425
10/31/2019	2.0%	74.3%	22.5%	0.2%	0.7%	0.0%	0.0%	0.0%	0.0%	0.0%	0.0%	0.0%	0.0%	0.2%	9	327	99	1	3	0	0	0	0	0	0	0	0	0	1	440
Total	1.7%	74.9%	20.5%	0.3%	2.2%	0.1%	0.0%	0.1%	0.0%	0.0%	0.0%	0.0%	0.0%	0.1%	25	1094	300	5	32	2	0	1	0	0	0	0	0	2	1461	

Class Data Summary

Bin #	1	2	3	4	5	6	7	8	9	10	11	12	13	14	Total
Bin Class	Cycles	Cars + Trailer	2 Axle Long	Bus	2 Axle 6-Tire	3 Axle Single	4 Axle Single	4 Axle Double	5 Axle Double	>6 Axle Double	<6 Axle Multi	6 Axle Multi	>6 Axle Multi	Unclassified	Total Volume
Survey Total	25	1094	300	5	32	2	0	1	0	0	0	0	0	2	1461
% Total	1.7%	74.9%	20.5%	0.3%	2.2%	0.1%	0.0%	0.1%	0.0%	0.0%	0.0%	0.0%	0.0%	0.1%	100%
Accumulated %	1.7%	76.6%	97.1%	97.5%	99.7%	99.8%	99.8%	99.9%	99.9%	99.9%	99.9%	99.9%	100.0%		
Inv. Accum. %	98.3%	23.4%	2.9%	2.5%	0.3%	0.2%	0.2%	0.1%	0.1%	0.1%	0.1%	0.1%	0.0%		



Classification Descriptions

Bin #	Bin Description
1	Motorcycles
2	Passenger cars, including those with recreational trailers
3	2-axle pick-ups, vans, and RVs, including those with recreational trailers
4	Buses
5	2-axle, 6-tire single units
6	3-axle single units
7	4-axle single units
8	3-axle or 4-axle double unit
9	5-axle double unit
10	6-, 7-, or 8-axle double unit
11	5-axle multiple unit
12	6-axle multiple unit
13	7-or-more-axle multiple unit
14	Vehicles that could not be classified

Site notes:

Nicholson St between Quadra St and Morris Dr

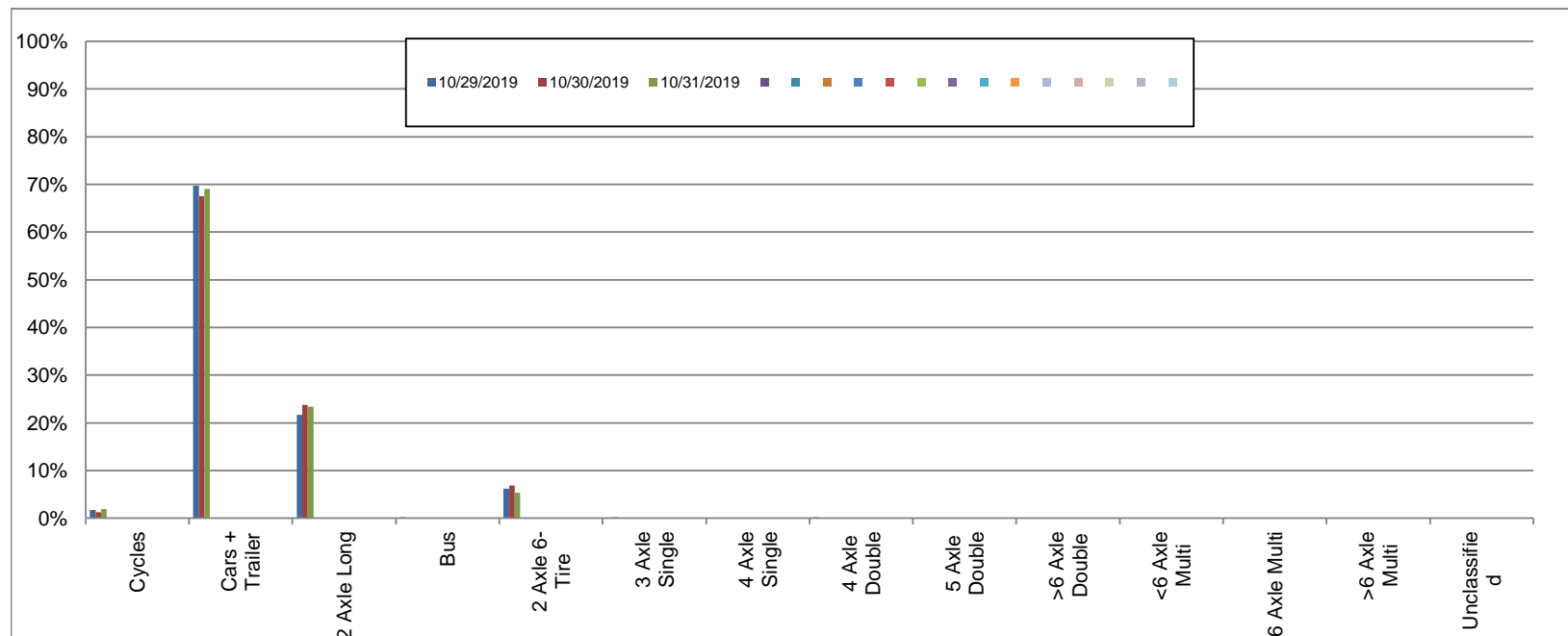
Eastbound

October 29, 2019 to October 31, 2019

Daily Class Bin Percentages															Daily Class Bin Volumes											Total Volume				
Bin #	1	2	3	4	5	6	7	8	9	10	11	12	13	14	1	2	3	4	5	6	7	8	9	10	11		12	13	14	
Bin Class	Cycles	Cars + Trailer	2 Axle Long	Bus	2 Axle 6-Tire	3 Axle Single	4 Axle Single	4 Axle Double	5 Axle Double	>6 Axle Double	<6 Axle Multi	6 Axle Multi	>6 Axle Multi	Unclassified	Cycles	Cars + Trailer	2 Axle Long	Bus	2 Axle 6-Tire	3 Axle Single	4 Axle Single	4 Axle Double	5 Axle Double	>6 Axle Double	<6 Axle Multi	6 Axle Multi	>6 Axle Multi	Unclassified		
10/29/2019	1.7%	69.7%	21.7%	0.2%	6.2%	0.1%	0.0%	0.2%	0.0%	0.0%	0.0%	0.0%	0.0%	0.1%	15	607	189	2	54	1	0	2	0	0	0	0	0	0	1	871
10/30/2019	1.2%	67.5%	23.8%	0.1%	6.9%	0.2%	0.0%	0.1%	0.0%	0.0%	0.0%	0.0%	0.0%	0.1%	10	559	197	1	57	2	0	1	0	0	0	0	0	0	1	828
10/31/2019	1.9%	69.1%	23.4%	0.1%	5.3%	0.0%	0.0%	0.0%	0.0%	0.0%	0.0%	0.0%	0.0%	0.1%	15	543	184	1	42	0	0	0	0	0	0	0	0	0	1	786
Total	1.6%	68.8%	22.9%	0.2%	6.2%	0.1%	0.0%	0.1%	0.0%	0.0%	0.0%	0.0%	0.0%	0.1%	40	1709	570	4	153	3	0	3	0	0	0	0	0	3	2485	

Class Data Summary

Bin #	1	2	3	4	5	6	7	8	9	10	11	12	13	14	Total Volume
Bin Class	Cycles	Cars + Trailer	2 Axle Long	Bus	2 Axle 6-Tire	3 Axle Single	4 Axle Single	4 Axle Double	5 Axle Double	>6 Axle Double	<6 Axle Multi	6 Axle Multi	>6 Axle Multi	Unclassified	Total Volume
Survey Total	40	1709	570	4	153	3	0	3	0	0	0	0	0	3	2485
% Total	1.6%	68.8%	22.9%	0.2%	6.2%	0.1%	0.0%	0.1%	0.0%	0.0%	0.0%	0.0%	0.0%	0.1%	100%
Accumulated %	1.6%	70.4%	93.3%	93.5%	99.6%	99.8%	99.8%	99.9%	99.9%	99.9%	99.9%	99.9%	99.9%	100.0%	
Inv. Accum. %	98.4%	29.6%	6.7%	6.5%	0.4%	0.2%	0.2%	0.1%	0.1%	0.1%	0.1%	0.1%	0.0%		



Classification Descriptions

Bin #	Bin Description
1	Motorcycles
2	Passenger cars, including those with recreational trailers
3	2-axle pick-ups, vans, and RVs, including those with recreational trailers
4	Buses
5	2-axle, 6-tire single units
6	3-axle single units
7	4-axle single units
8	3-axle or 4-axle double unit
9	5-axle double unit
10	6-, 7-, or 8-axle double unit
11	5-axle multiple unit
12	6-axle multiple unit
13	7-or-more-axle multiple unit
14	Vehicles that could not be classified

Site notes: